

ÇAĞRI YETGİN ***CIVATA***

BAĞLANTI ELEMANLARI HIRDAVAT TARIM SAN.TİC.LTD.ŞTİ.



DIN 933 ISO 4017
ALTİKÖŞE TAM DIŐ CIVATA CL: 6.8



ÖLÇÜ	CİNSİ
M 6*10	AKD
M 6*12	AKD
M 6*15	AKD
M 6*20	AKD
M 6*25	AKD
M 6*30	AKD
M 6*35	AKD
M 6*40	AKD
M 6*45	AKD
M 6*50	AKD
M 8*15	AKD
M 8*20	AKD
M 8*25	AKD
M 8*30	AKD
M 8*35	AKD
M 8*40	AKD
M 8*45	AKD
M 8*50	AKD
M 10*20	AKD
M 10*25	AKD
M 10*30	AKD
M 10*35	AKD
M 10*40	AKD
M 10*45	AKD
M 10*50	AKD
M 10*60	AKD
M 10*70	AKD
M 10*80	AKD
M 10*90	AKD
M 10*100	AKD
M 12*25	AKD
M 12*30	AKD
M 12*35	AKD
M 12*40	AKD
M 12*45	AKD
M 12*50	AKD
M 12*55	AKD
M 12*60	AKD
M 12*70	AKD
M 12*80	AKD
M 12*90	AKD
M 12*100	AKD



DIN 7985 ISO 7045 YILDIZ SİLİNDİR BAŞ VİDA CL: 6.8



ÖLÇÜ	CİNSİ
M 4*6	YSB
M 4*8	YSB
M 4*10	YSB
M 4*12	YSB
M 4*15	YSB
M 4*20	YSB
M 4*25	YSB
M 4*30	YSB
M 4*35	YSB
M 4*40	YSB
M 4*45	YSB
M 4*50	YSB
M 5*8	YSB
M 5*10	YSB
M 5*12	YSB
M 5*15	YSB
M 5*20	YSB
M 5*25	YSB
M 5*30	YSB
M 5*35	YSB
M 5*40	YSB
M 5*45	YSB
M 5*50	YSB
M 6*8	YSB
M 6*10	YSB
M 6*12	YSB
M 6*15	YSB
M 6*20	YSB
M 6*25	YSB
M 6*30	YSB
M 6*35	YSB
M 6*40	YSB
M 6*45	YSB
M 6*50	YSB
M 6*60	YSB
M 6*70	YSB
M 6*80	YSB
M 6*90	YSB
M 6*100	YSB
M 8*10	
M 8*15	
M 8*20	
M 8*25	
M 8*30	
M 8*35	
M 8*40	
M 8*45	
M 8*50	
M 8*60	
M 8*70	
M 8*80	
M 8*90	
M 8*100	



DIN 965 ISO 7046 YILDIZ HAVŞA BAŞ VİDA CL: 6.8



ÖLÇÜ	CİNSİ
M 4*6	YHB
M 4*8	YHB
M 4*10	YHB
M 4*12	YHB
M 4*15	YHB
M 4*20	YHB
M 4*25	YHB
M 4*30	YHB
M 4*35	YHB
M 4*40	YHB
M 4*45	YHB
M 4*50	YHB
M 5*10	YHB
M 5*12	YHB
M 5*15	YHB
M 5*20	YHB
M 5*25	YHB
M 5*30	YHB
M 5*35	YHB
M 5*40	YHB
M 5*45	YHB
M 5*50	YHB
M 5*60	YHB
M 5*70	YHB
M 5*80	YHB
M 5*90	YHB
M 5*100	YHB
M 6*10	YHB
M 6*12	YHB
M 6*15	YHB
M 6*20	YHB
M 6*25	YHB
M 6*30	YHB
M 6*35	YHB
M 6*40	YHB
M 6*45	YHB
M 6*50	YHB
M 6*60	YHB
M 6*70	YHB
M 8*15	YHB
M 8*20	YHB
M 8*25	YHB
M 8*30	YHB
M 8*35	YHB
M 8*40	YHB
M 8*45	YHB
M 8*50	YHB
M 8*60	YHB
M 8*70	YHB



DIN 9335 **BOMBE BAŞ İMBUS** CL: 6.8/ DIN 967
RONDELALI YILDIZ SİLİNDİR BAŞ CL: 6.8
DIN 7420 **ALLEN ÇEKTİRME** CL : 6.8

ÇAĞRI YETGİN CIVATA
BAĞLANTI ELEMANLARI HIRDAVAT TARIM SAN.TİC.LTD.ŞTİ.

ÖLÇÜ	CİNSİ
M 5*10	BB-İMBUS-FLANŞLI
M 5*12	BB-İMBUS-FLANŞLI
M 5*16	BB-İMBUS-FLANŞLI
M 5*20	BB-İMBUS-FLANŞLI
M 6*12	BB-İMBUS-FLANŞLI
M 6*16	BB-İMBUS-FLANŞLI
M 6*20	BB-İMBUS-FLANŞLI
M 6*25	BB-İMBUS-FLANŞLI
M 6*30	BB-İMBUS-FLANŞLI
M 6*35	BB-İMBUS-FLANŞLI
M 6*40	BB-İMBUS-FLANŞLI
M 6*50	BB-İMBUS-FLANŞLI
M 5*10	RYSB
M 5*12	RYSB
M 5*15	RYSB
M 5*20	RYSB
M 5*25	RYSB
M 5*30	RYSB
M 5*35	RYSB
M 5*40	RYSB
M 5*45	RYSB
M 5*50	RYSB
M 6*15	RYSB
M 6*20	RYSB
M 6*25	RYSB
M 6*30	RYSB
M 6*35	RYSB
M 6*40	RYSB
M 6*45	RYSB
M 6*50	RYSB
M 6*15	ALLEN
M 6*20	ALLEN
M 6*25	ALLEN
M 6*30	ALLEN
M 6*35	ALLEN
M 6*40	ALLEN
M 6*45	ALLEN
M 6*50	ALLEN
M 6*55	ALLEN
M 6*60	ALLEN
M 6*70	ALLEN
M 6*80	ALLEN
M 4*10	KULP
M 4*12	KULP
M 4*15	KULP
M 4*20	KULP
M 4*22	KULP
M 4*25	KULP
M 4*30	KULP
M 4*35	KULP
M 4*40	KULP
M 4*45	KULP
M 4*50	KULP



DIN 603 ISO 8677 MANTAR BAŞ TAVA-KASA CIVATASI CL: 6.8



ÖLÇÜ	CİNSİ
M 6*12	TAVA-KANAL
M 6*15	TAVA-KANAL
M 6*20	TAVA-KANAL
M 6*25	KASA
M 6*30	KASA
M 6*35	KASA
M 6*40	KASA
M 6*45	KASA
M 6*50	KASA
M 8*15	TAVA-KANAL
M 8*20	TAVA-KANAL
M 8*25	TAVA-KANAL
M 8*30	KASA
M 8*35	KASA
M 8*40	KASA
M 8*45	KASA
M 8*50	KASA
M 8*60	KASA
M 8*70	KASA
ÖLÇÜ	CİNSİ
1/4*30	KASA
1/4*35	KASA
1/4*40	KASA
1/4*45	KASA
1/4*50	KASA
1/4*60	KASA
1/4*70	KASA
1/4*80	KASA
1/4*90	KASA
1/4*100	KASA
5/16*30	KASA
5/16*35	KASA
5/16*40	KASA
5/16*45	KASA
5/16*50	KASA
5/16*60	KASA
5/16*70	KASA
5/16*80	KASA
5/16*90	KASA
5/16*100	KASA
5/16*110	KASA
5/16*120	KASA
5/16*130	KASA



DIN 7981-7982 -7983 YSB-YHB -YMB SAC VİDALARI

BOY 2.9 3.5 3.9 4.2 4.8 5.5 6.3



YSB-YMB SAC VİDALARI 7981-7983
BOY
6.5
9.5
13
16
19
22
25
32
38
45
50
60
YHB SAC VİDALARI 7982
6.5
9.5
13
16
19
22
25
32
38
45
50
60



DIN 603 ISO 8677
MANTAR BAŐ TAVA-KASA CIVATASI CL: 6.8

M5 M6 M7 M8 M10 M12 M14 M16



Boy/mm
10
12
15
16
18
20
25
30
35
40
45
50
55
60
65
70
75
80
85
90
100
110
120
130
140
150
160
170
180
190
200
210
220
230
240
250
260
270
280
290
300



DIN 931-933 8.8 KALİTE METRİK ÇELİK CİVATALAR SİYAH

MM

M5 M6 M7 M8 M10 M12 M14 M16



Boy/mm
10
12
15
16
18
20
25
30
35
40
45
50
55
60
65
70
75
80
85
90
100
110
120
130
140
150
160
170
180
190
200
210
220
230
240
250
260
270
280
290
300



DIN 931-933 8.8 KALİTE METRİK ÇELİK CİVATALAR SİYAH

MM

M18 M20 M22 M24 M27 M30 M33 M36



Boy
40
45
50
55
60
65
70
75
80
85
90
100
110
120
130
140
150
160
170
180
190
200
210
220
230
240
250
260
270
280
290
300



DIN 912 İMBUS CIVATALAR 8.8 KALİTE

MM
M3 M4 M5 M6 M8 M10 M12 M14

ÇAĞRI YETGİN CIVATA
BAĞLANTI ELEMANLARI HIRDAVAT TARIM SAN.TİC.LTD.ŞTİ.

Boy/mm
8
10
12
14
16
18
20
25
30
35
40
45
50
55
60
65
70
75
80
90
100
110
120
130
140
150
160
170
180
190
200
210
220
230
240
250
260
270
280
290
295



DIN 912 İMBUS CIVATALAR 8.8 KALİTE

MM
M16 M18 M20 M22 M24 M27 M30

ÇAĞRI YETGİN CIVATA
BAĞLANTI ELEMANLARI HIRDAVAT TARIM SAN.TİC.LTD.ŞTİ.

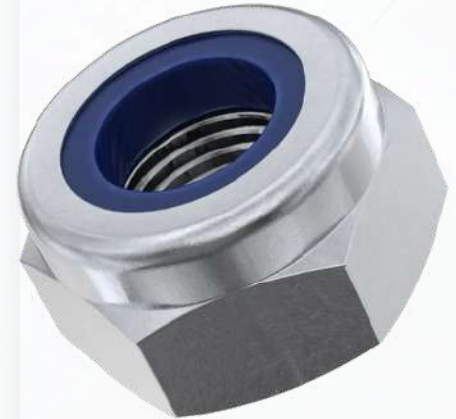
Boy/mm
25
30
35
40
45
50
55
60
65
70
75
80
90
100
110
120
130
140
150
160
170
180
190
200
210
220
230
240
250
260
270
280
290



ÇELİK SOMUN DIN 934 KAPLAMASIZ CL:6
FİBERLİ SOMUN DIN 985 BEYAZ CL:6
FLANŞLI SOMUN DIN 6923 BEYAZ CL:6
ALLEN ÇEKTİRME SOMUNU

ÇAĞRI YETGİN CIVATA
BAĞLANTI ELEMANLARI HIRDAVAT TARIM SAN.TİC.LTD.ŞTİ.

SOMUN
M 5
M 6
M 7
M 8
M10
M12
M14
M16
M18
M20
M22
M24
M27
M30
M33
M36
M 39
M 42
M 45
M 48
M 52
M 56
M 60
M 64



DIN 976-1 GİJON

BOY 1 MT 1000 MM
BOY 2 MT 2000 MM
BOY 3 MT 3000 MM

cinsi
M 5 GİJON
M 6 GİJON
M 8 GİJON
M 10 GİJON
M 12 GİJON
M 14 GİJON
M 16 GİJON
M 18 GİJON
M 20 GİJON
M 22 GİJON
M 24 GİJON
M 27 GİJON
M 30 GİJON
M 33 GİJON
M 36 GİJON
M 39 GİJON
M 42 GİJON
M 45 GİJON
M 48 GİJON
M 52 GİJON
M 56 GİJON
M 60 GİJON
M 64 GİJON
M 68 GİJON

